

# SUPER SHIELD CHAIN

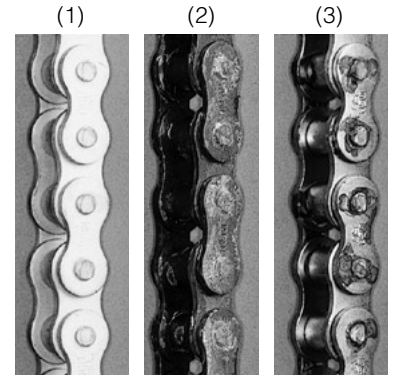
SUPER SHIELD CHAIN by OCM is a corrosion resistant chain for areas exposed directly to water. Second only to OCM's stainless steel roller chain in corrosion resistance, SUPER SHIELD CHAIN also retains almost the strength of standard roller chain.

A tough protective coating is baked onto the chain, providing corrosion resistance up to 250°C. When you need a chain for corrosion resistance to salt water, rain water, etc., use SUPER SHIELD CHAIN.

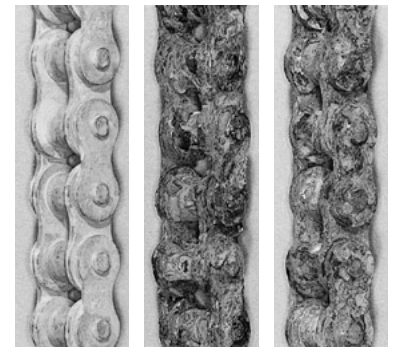
When addressing contact with food or other applications requiring resistance to acids, use OCM's stainless steel roller chain products.

Test Result – See the pictures shown on the right –  
Chain was sprayed with salt water. The test was made in accordance with JIS Z2371, Japan Industrial Standard.

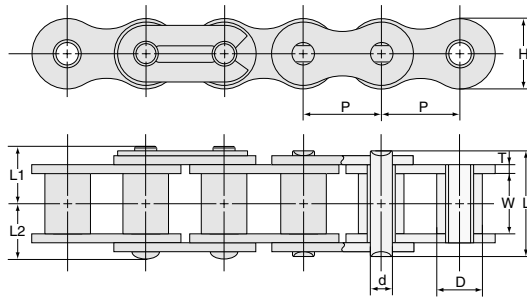
- (1) OCM SUPER SHIELD CHAIN
- (2) Competitor's Equivalent
- (3) OCM Nickel Plated Chain



Chain after 72 hours elapsed



Chain after 504 hours elapsed



UNIT Upper:inch  
Beneath:mm

OCM Chain No.	Pitch P	Roller Diam. D	Width between L.P. W	Link Plate		Pin Diam. d	Pin			Ultimate Tensile Strength Lb/kgf	Max. Working Load Lb/kgf	Approx Weight Lb/ft kg/m	
				H	T		L	L1	L2				
ANSI ROLLER CHAIN	OCM35 SC	0.375 9.525	0.200 5.080	0.189 4.80	0.355 9.00	0.049 1.25	0.141 3.58	0.461 11.7	0.264 6.7	0.240 6.1	1,985 900	419 190	0.242 0.36
	OCM40 SC	0.500 12.70	0.313 7.940	0.313 7.95	0.473 12.00	0.059 1.50	0.156 3.96	0.634 16.1	0.382 9.7	0.319 8.1	3,175 1,440	860 390	0.443 0.66
	OCM50 SC	0.625 15.875	0.400 10.16	0.376 9.55	0.591 15.00	0.079 2.00	0.200 5.08	0.800 20.3	0.477 12.1	0.410 10.4	5,358 2,430	1,389 630	0.713 1.08
	OCM60 SC	0.750 19.05	0.469 11.91	0.500 12.70	0.709 18.00	0.095 2.40	0.234 5.95	1.001 25.4	0.579 14.7	0.500 12.7	7,641 3,465	2,095 950	1.067 1.6
	OCM80 SC	1.000 25.40	0.625 15.88	0.627 15.90	0.949 24.10	0.126 3.20	0.313 7.94	1.289 32.7	0.741 18.8	0.709 18.0	14,289 6,480	3,638 1,650	1.868 2.8
	OCM100 SC	1.250 31.75	0.750 19.05	0.755 19.15	1.185 30.10	0.158 4.00	0.375 9.53	1.698 43.1	0.925 23.5	0.787 20.0	21,434 9,720	5,513 2,500	2.801 4.2
	OCM120 SC	1.500 38.10	0.876 22.23	1.007 25.55	1.425 36.20	0.189 4.80	0.438 11.11	2.124 53.9	1.119 28.4	0.989 25.1	29,967 13,590	7,277 3,300	4.135 6.2
BS ROLLER CHAIN	OCM06B SC	0.375 9.525	0.250 6.35	0.225 5.72	0.323 8.20	0.052 1.32	0.129 3.28	0.528 13.4	0.283 7.2	0.244 6.2	1,805 819	- -	0.246 0.37
	OCM08B SC	0.500 12.70	0.335 8.51	0.309 7.85	0.464 11.80	0.063 1.62	0.175 4.45	0.720 18.3	0.386 9.8	0.335 8.5	3,611 1,638	- -	0.473 0.71
	OCM10B SC	0.625 15.875	0.400 10.16	0.386 9.80	0.579 14.70	0.063 1.62	0.200 5.08	0.835 21.2	0.457 11.6	0.378 9.6	4,504 2,043	- -	0.633 0.95
	OCM12B SC	0.750 19.05	0.475 12.07	0.460 11.70	0.634 16.10	0.074 1.88	0.225 5.72	0.956 24.3	0.516 13.1	0.441 11.2	5,854 2,655	- -	0.867 1.3
	OCM16B SC	1.000 25.40	0.625 15.88	0.671 17.05	0.830 21.08	0.161 4.10	0.326 8.28	1.504 38.2	0.795 20.2	0.709 18.0	12,899 5,850	- -	1.934 2.9
	OCM20B SC	1.250 31.75	0.750 19.05	0.771 19.60	1.039 26.40	0.173 4.40	0.401 10.19	1.748 44.4	0.933 23.7	0.815 20.7	19,845 9,000	- -	2.535 3.8
	OCM24B SC	1.500 38.10	1.000 25.40	1.000 25.40	1.315 33.40	0.232 5.90	0.575 14.61	2.311 58.7	1.260 32.0	1.051 26.7	33,736 15,300	- -	4.736 7.1

ANSI: 25H thru 240, BS: 06B thru 32B is available