

# CT TYPE CLIP TOP CHAIN

Plastic tops are snapped on extended pins of chain. The chain is enclosed with plastic tops. As there is no opening on plastic tops, it makes foreign objects difficult to go into between plastic tops.

Clip top chain is well suitable for applications where the strength of steel chain and the smooth surface of plastic are required, making it possible to convey heavy loads and prevent materials to be conveyed from damaging.

Carbon steel chain : CT-30-A

Nickel plated carbon steel chain : CT40N-U

Stainless steel chain (SUS304) : CT40SUS-E

Selflube steel chain : CT60SER-A

Type of plastic top :

A : Polyacetal (White) for general conveyance

U : Polyurethane (semi transparent) for slip-resistant conveyance

E : Electro conductive polyamide for preventing materials to be conveyed from electrification.

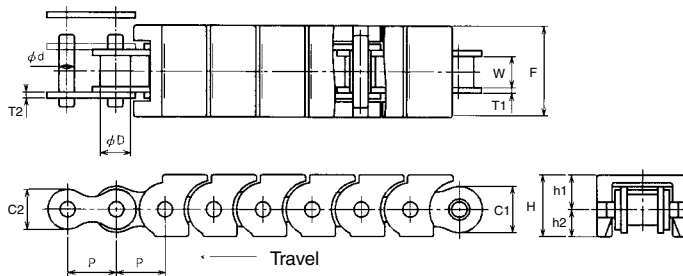
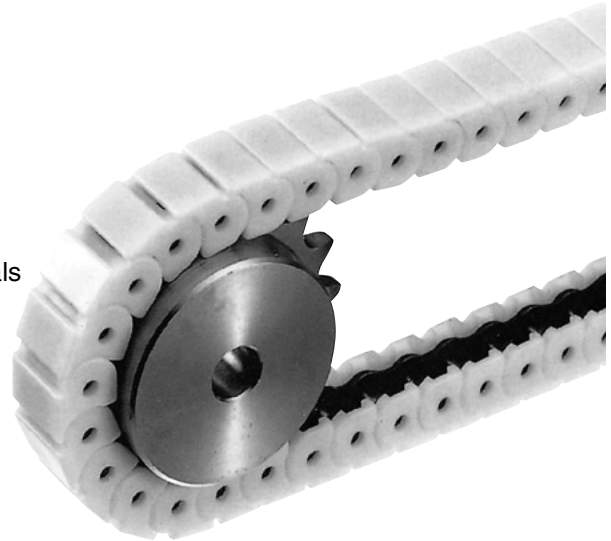
Usable temperature : -10°C to 70°C

(Polyurethane : -10°C to 50°C)

Max chain speed : 30m/min.

(Recommend : 15m/min and slower)

Minimum number of teeth of sprockets : 13



UNIT:mm

OCM Chain No.				Pitch P	Roller Diam. D	Width between L.P. W	Link Plate				Pin Diam. d	Clip Top			
Carbon Steel	N Type	SUS Type	SER Type				C1	C2	T1	T2		h1	h2	H	F
OCM CT30	CT30N			9.525	6.35	5.72	8.2	8.2	1.32	1	3.28	7.5	5.5	13	17.3
OCM CT40	CT40N	CT40SUS	CT40SER	12.7	7.92	7.95	12	10.4	1.5	1.5	3.96	9	7	16	23.5
OCM CT60	CT60N	CT60SUS	CT60SER	19.05	11.91	12.7	18	15.3	2.4	2.4	5.95	13.5	10.5	24	35.5

CARBON STEEL N. SER TYPE		SUS TYPE		Max Load per Pitch kg/m	Approx Weight kg/m
OCM Chain No.	Max Allowable Tension kN(kgf)	OCM Chain No.	Max Allowable Tension kN(kgf)		
OCM CT30 OCM CT30N	1.47(150)		-	3	0.55
OCM CT40 OCM CT40N OCM CT40SER	2.75(280)	CT40SUS	0.44(45)	5	0.85
OCM CT60 OCM CT60N OCM CT60SER	6.28(640)	CT60SUS	1.03(105)	10	1.95

	CT30	CT40	CT60
C(min)	7	8.5	12.5



If chain may interfere with the hub of sprockets, "C" dimension should be as shown above.