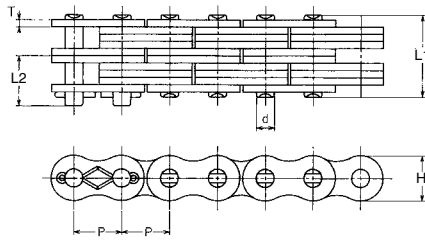
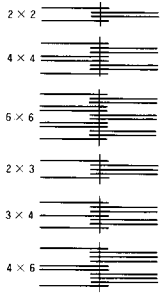


BL SERIES LEAF CHAIN



UNIT:mm

OCM Chain No.	Pitch P	Lacing	Link Plate		Pin Diam. d	Pin		Minimum Strength Tensile		Approx Weight kg/m	Hole Diam. (min)	
			H	T		L1	L2	kN	kgf			
BL422	12.7	2X2	12	2	5.08	10.4	7.5	24.51	2500	0.63	5.13	
BL423		2X3				12.6	8.5	24.51	2500			0.79
BL434		3X4				16.8	10.6	36.76	3750			1.09
BL444		4X4				18.9	11.7	49.02	5000			1.24
BL446		4X6				23.2	13.8	49.02	5000			1.55
BL466	6X6	27.4	15.9	73.53	7500	1.58						
BL522	15.875	2X2	15	2.4	5.95	12.2	8.7	38.78	3950	0.95	6	
BL523		2X3				14.7	10	38.78	3950			1.17
BL534		3X4				20.3	12.5	59.8	6100			1.63
BL544		4X4				22.1	13.7	77.45	7900			1.85
BL546		4X6				27.2	16.2	77.45	7900			2.31
BL566	6X6	32	18.6	116.18	11850	2.76						
BL622	19.05	2X2	18	3.2	7.94	16.4	11.8	63.73	6500	1.53	8.01	
BL623		2X3				19.7	13.4	63.73	6500			1.89
BL634		3X4				26.3	16.8	95.59	9750			2.62
BL644		4X4				29.8	18.5	127.45	13000			2.99
BL646		4X6				36.2	21.8	127.45	13000			3.71
BL666	6X6	43.2	25.2	191.18	19500	4.45						
BL822	25.4	2X2	24	4	9.53	20.1	13.9	95.1	9700	2.6	9.6	
BL823		2X3				24.3	16	95.1	9700			3.24
BL834		3X4				32.5	20.1	156.86	16000			4.5
BL844		4X4				36.7	22.2	200	20400			5.14
BL846		4X6				45	26.4	200	20400			6.4
BL866	6X6	53.2	30.5	285.29	29100	7.66						
BL1022	31.75	2X2	30	4.8	11.11	24	15.7	137.25	14000	3.89	11.19	
BL1023		2X3				28.9	18.1	137.25	14000			4.84
BL1034		3X4				38.8	23.1	235.29	24000			6.73
BL1044		4X4				43.8	25.6	274.51	28000			7.67
BL1046		4X6				53.6	30.5	274.51	28000			9.56
BL1066	6X6	63.6	35.5	411.76	42000	11.5						
BL1222	38.1	2X2	36	5.6	12.7	27.8	19.2	176.47	18000	5.44	12.78	
BL1223		2X3				33.8	22.1	176.47	18000			6.78
BL1234		3X4				45.3	27.9	284.31	29000			9.43
BL1244		4X4				51.1	30.8	352.94	36000			10.8
BL1246		4X6				62.6	36.6	352.94	36000			13.4
BL1266	6X6	74.3	42.5	529.41	54000	16.1						
BL1422	44.45	2X2	42	6.4	14.29	31.8	-	215.69	22000	7.22	14.36	
BL1423		2X3				38.4	-	215.69	22000			8.98
BL1434		3X4				51.6	-	343.14	35000			12.5
BL1444		4X4				58.2	-	431.37	44000			14.3
BL1446		4X6				71.4	-	431.37	44000			17.8
BL1466	6X6	84.6	-	647.06	66000	21.3						
BL1622	50.8	2X2	48.2	7.2	17.45	35.8	-	323.53	33000	9.25	17.55	
BL1623		2X3				43.8	-	323.53	33000			11.5
BL1634		3X4				58.6	-	517.65	52800			16
BL1644		4X4				66.1	-	647.06	66000			18.3
BL1646		4X6				80.7	-	647.06	66000			22.8
BL1666	6X6	96.4	-	970.59	99000	27.3						

PLASTIC CHAIN