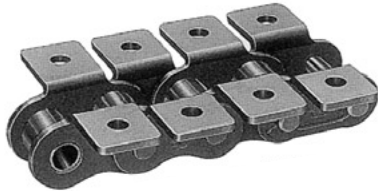
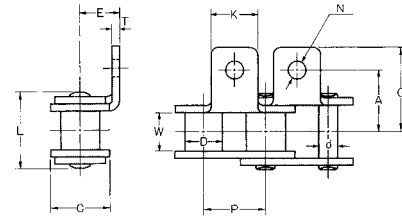


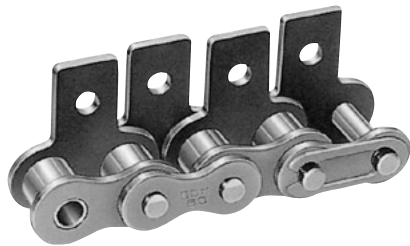
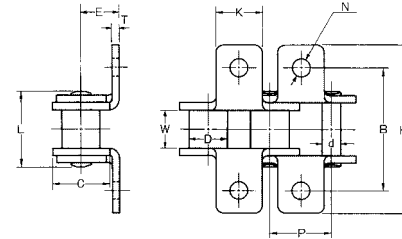
# ROLLER CHAIN WITH ATTACHMENT



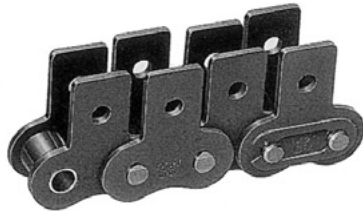
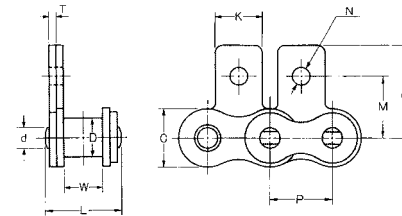
TYPE A-1



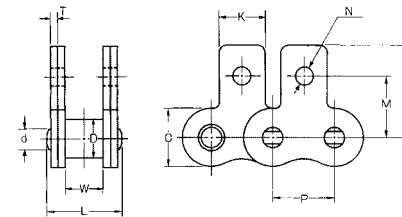
TYPE K-1



TYPE SA-1



TYPE SK-1



UNIT Upper:inch  
Beneath:mm

OCM Chain No.	Pitch P	Roller Diam. D	Width between L.P. W	Link Plate		Pin		(BA-BK-SA-SK) Attachment										Additional Weight Per Attachment Lb/kg	
								(2A)					(2G)						
								C	T	d	L	(L)	K	N	A	E	G		
25	0.250	0.130	0.126	0.230	0.030	0.091	0.295	0.307	0.220	0.134	0.281	0.187	0.390	0.563	0.780	0.313	0.459	0.0007	0.0013
	6.35	3.3	3.2	5.85	0.75	2.3	7.5	7.8	5.6	3.4	7.15	4.75	9.9	14.3	19.8	7.95	11.65	0.0003	0.0006
35	0.375	0.200	0.189	0.354	0.049	0.141	0.461	0.465	0.311	0.110	0.374	0.250	0.508	0.748	1.016	0.374	0.579	0.0018	0.0035
	9.525	5.08	4.8	9	1.25	3.58	11.7	11.8	7.9	2.8	9.5	6.35	12.9	19	25.8	9.5	14.7	0.0008	0.0016
40	0.500	0.312	0.313	0.472	0.059	0.156	0.634	0.654	0.374	0.142	0.500	0.315	0.691	1.000	1.382	0.500	0.750	0.0022	0.0044
	12.7	7.92	7.95	12	1.5	3.96	16.1	16.6	9.5	3.6	12.7	8	17.55	25.4	35.1	12.7	19.05	0.001	0.002
50	0.625	0.400	0.376	0.591	0.079	0.200	0.799	0.819	0.500	0.205	0.626	0.406	0.909	1.252	1.819	0.628	0.994	0.0088	0.0176
	15.875	10.16	9.55	15	2	5.08	20.3	20.8	12.7	5.2	15.9	10.3	23.1	31.8	46.2	15.95	25.25	0.004	0.008
60	0.750	0.469	0.500	0.709	0.094	0.234	1.000	1.020	0.626	0.205	0.750	0.469	1.094	1.500	2.189	0.720	1.155	0.0154	0.0309
	19.05	11.91	12.7	18	2.4	5.95	25.4	25.9	15.9	5.2	19.05	11.9	27.8	38.1	55.6	18.3	29.33	0.007	0.014
80	1.000	0.625	0.626	0.945	0.126	0.313	1.287	1.299	0.752	0.268	1.000	0.626	1.276	2.000	2.551	0.969	1.366	0.0243	0.0485
	25.4	15.88	15.9	24	3.2	7.94	32.7	33	19.1	6.8	25.4	15.9	32.4	50.8	64.8	24.6	34.7	0.011	0.022
100	1.250	0.750	0.754	1.181	0.157	0.375	1.697	1.701	1.000	0.346	1.250	0.780	1.719	2.500	3.437	1.252	1.705	0.0507	0.1014
	31.75	19.05	19.15	30	4	9.53	43.1	43.2	25.4	8.8	31.75	19.8	43.65	63.5	87.3	31.8	43.3	0.023	0.046
120	1.500	0.875	1.006	1.417	0.189	0.437	2.106	2.114	1.126	0.413	1.500	0.906	2.136	3.000	4.272	1.437	2.031	0.0838	0.1676
	38.1	22.23	25.55	36	4.8	11.11	53.5	53.7	28.6	10.5	38.1	23	54.25	76.2	108.5	36.5	51.6	0.038	0.076
140	1.750	1.000	1.004	1.654	0.220	0.500	2.319	2.323	1.374	0.472	1.750	1.126	2.421	3.500	4.843	1.750	2.441	0.1455	0.291
	44.45	25.4	25.5	42	5.6	12.7	58.9	59	34.9	12	44.45	28.6	61.5	88.9	123	44.45	62	0.066	0.132
160	2.000	1.125	1.256	1.850	0.252	0.563	2.720	2.728	1.500	0.551	2.000	1.252	2.811	4.000	5.622	2.000	2.750	0.172	0.3439
	50.8	28.58	31.9	47	6.4	14.29	69.1	69.3	38.1	14	50.8	31.8	71.4	101.6	142.8	50.8	69.85	0.078	0.156

Stainless attachment chain is available.  
(L) indicates the dimension of stainless steel chain.