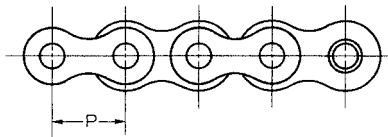
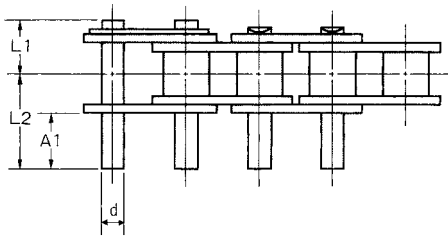


ROLLER CHAIN WITH EXTEND PIN



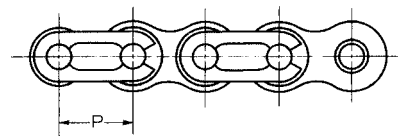
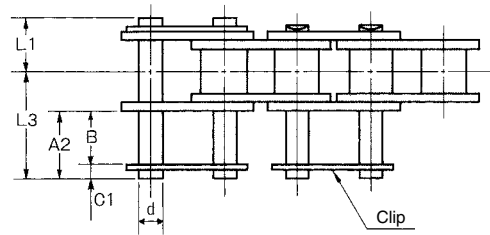
D-3



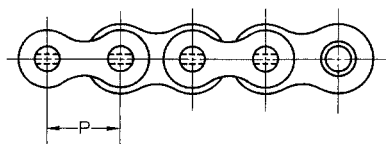
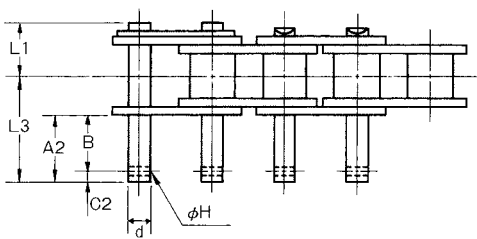
D-3 EXTEND PIN



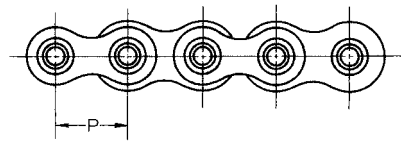
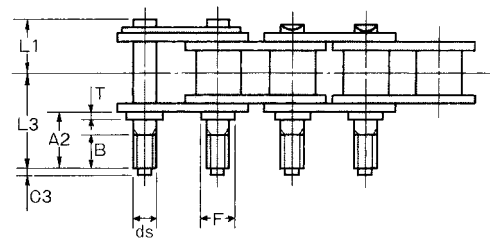
D-1



EXTEND PIN WITH SPRING CLIP



EXTEND PIN WITH COTTER HOLE



THREADED EXTEND PIN

UNIT Upper:inch
Beneath:mm

OCM Chain No.	Pitch		Pin Diam.		Link Plate			Pin		Pin				L3,A2,B
	P		d	ds	F	T	phi H	L1	L2	A1	C1	C2	C3	
35	0.375		0.141		0.180	0.047	0.047	0.264	0.575	0.374	0.067	0.055	0.039	
	9.525		3.58	M3	4.58	1.2	1.2	6.7	14.6	9.5	1.7	1.4	1.0	
40	0.500		0.156		0.201	0.059	0.063	0.382	0.657	0.374	0.091	0.083	0.039	
	12.7		3.96	M4	5.11	1.5	1.6	9.7	16.7	9.5	2.3	2.1	1.0	
50	0.625		0.200		0.238	0.079	0.063	0.476	0.827	0.469	0.122	0.091	0.039	
	15.875		5.08	M5	6.04	2	1.6	12.1	21	11.9	3.1	2.3	1.0	
60	0.750		0.234		0.319	0.094	0.079	0.579	1.014	0.563	0.122	0.102	0.059	
	19.05		5.95	M6	8.09	2.4	2	14.7	25.75	14.3	3.1	2.6	1.5	
80	1.000		0.313		0.381	0.126	0.102	0.776	1.331	0.752	0.154	0.142	0.059	
	25.4		7.94	M8	9.68	3.2	2.6	19.7	33.8	19.1	3.9	3.6	1.5	
100	1.250		0.375		0.443	0.157	0.122	0.925	1.642	0.937	-	0.157	0.079	
	31.75		9.53	M10	11.26	4	3.1	23.5	41.7	23.8	-	4.0	2.0	
120	1.500		0.437		0.520	0.189	0.122	1.118	2.020	1.126	-	0.157	0.079	
	38.1		11.11	M12	13.2	4.8	3.1	28.4	51.3	28.6	-	4.0	2.0	

Spring clip is not available for 100 and above.