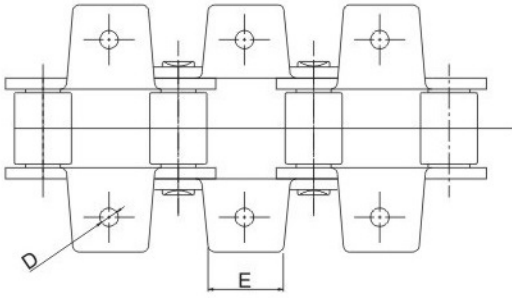
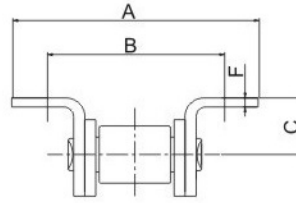
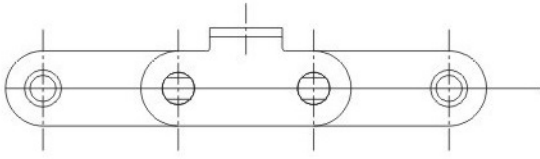
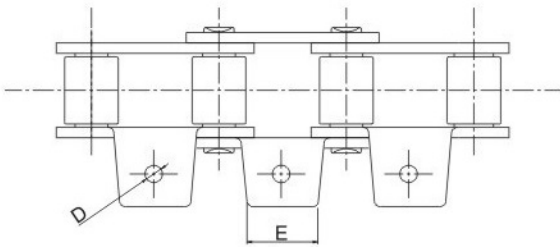
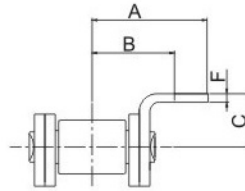
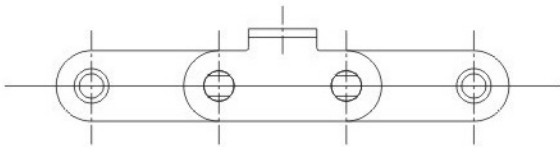


AGRICULTURAL CHAINS



CA555 / K19,K24,K28 ATTACHMENT CA550 / K18,K19,K25,K27,K29

ATT. NO.	Chain NO.	A	B	C	D	E	F
K18	CA550	71.4	54.0	12.7	6.75	22.2	2.67
K19	CA550	71.4	50.8	12.7	6.75	22.2	2.67
K25	CA550	71.4	50.8	12.7	8.33	22.2	2.67
K27	CA550	71.4	54.0	12.7	8.33	22.2	2.67
K29	CA550	71.4	50.8	12.7	9.92	22.2	2.67
K19	CA555	65.9	50.8	12.7	6.75	22.2	3.18
K24	CA555	61.1	42.9	13.5	6.75	22.2	3.18
K28	CA555	61.1	42.9	13.5	8.33	22.2	3.18



CA555 / A19,A24,A28 ATTACHMENT CA550 / A18,A19,A25,A27,A29 ATTACHMENT

ATT. NO.	Chain NO.	A	B	C	D	E	F
A18	CA550	35.7	27.0	12.7	6.75	22.2	2.67
A19	CA550	35.7	25.4	12.7	6.75	22.2	2.67
A25	CA550	35.7	25.4	12.7	8.33	22.2	2.67
A27	CA550	35.7	27.0	12.7	8.33	22.2	2.67
A29	CA550	35.7	25.4	12.7	9.92	22.2	2.67
A19	CA555	32.9	25.4	12.7	6.75	22.2	3.18
A24	CA555	32.9	21.4	13.5	6.75	22.2	3.18
A28	CA555	30.6	21.4	13.5	8.33	22.2	3.18