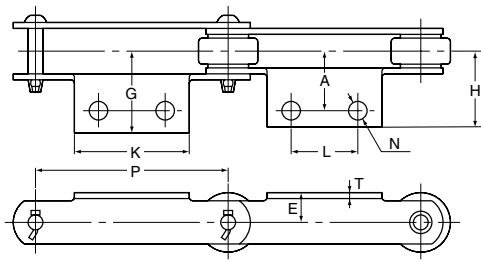
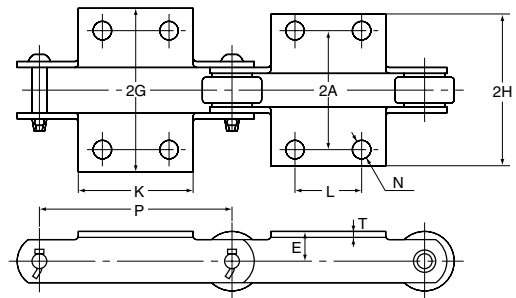


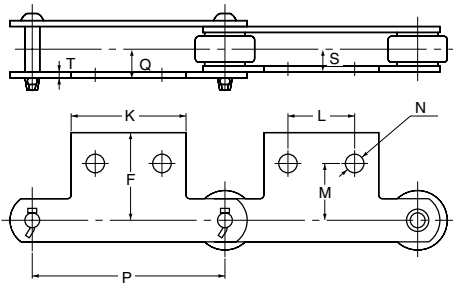
ATTACHMENT CONVEYOR CHAIN



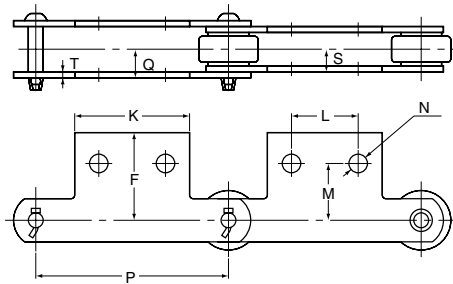
TYPE A-2



TYPE K-2



TYPE SA-2



TYPE SK-2

UNIT:mm

| OCM Chain No. | Pitch P | Link Plate T | A-2 and K-2 Attachment | | | | | | | SA-2 and SK-2 | | | | Weight Attachment kg | |
|------------------|------------|--------------------|------------------------|----|--------|----|------|-------|-------|---------------|-------|------|------|----------------------------|------|
| | | | K | N | L | A | E | G | H | M | F | S | Q | A-2 | K-2 |
| | | | | | | | | | | | | | | | |
| FM 3075-R.F.S | 75 | | 58(55) | | 35(30) | | | | | | | | | 0.05 | 0.10 |
| FM 3100-R.F.S | 100 | | 65 | | 40 | | | | | | | | | 0.06 | 0.12 |
| FM 3125-R.F.S | 125 | 3.2 | 75 | 10 | 50 | 30 | (20) | 46 | 42.4 | 30 | 42 | 12.2 | 15.8 | 0.06 | 0.12 |
| FM 3150-R.F.S | 150 | | 85 | | 60 | | | | | | | | | 0.07 | 0.14 |
| FM 5075-R.F.S | 75 | | 58 | | 35 | | | | | | | | | 0.07 | 0.14 |
| FM 5100-R.F.S. | 100 | | 65 | | 40 | | | | | | | | | 0.08 | 0.16 |
| FM 5125-R.F.S | 125 | 4.5 | 75 | 10 | 50 | 35 | 22 | 47 | 47 | 40 | 54 | 15.6 | 20.5 | 0.09 | 0.18 |
| FM 5150-R.F.S | 150 | | 85 | | 60 | | | | | | | | | 0.10 | 0.20 |
| FM 7100-R.F.S | 100 | | 70 | | 40 | | | | | | | | | 0.20 | 0.40 |
| FM 7125-R.F.S | 125 | | 80 | | 50 | | | | | | | | | 0.22 | 0.44 |
| FM 7150-R.F.S | 150 | 6.0 | 90 | 12 | 60 | 40 | 25 | 63 | 56.6 | 45 | 58 | 18.5 | 24.9 | 0.25 | 0.50 |
| FM 7175-R.F.S | 175 | | 100 | | 70 | | | | | | | | | 0.28 | 0.56 |
| FM 10100-R.F.S.M | 100 | | 70 | | 40 | | | | | | | | | 0.18 | 0.36 |
| FM 10125-R.F.S.M | 125 | | 80 | | 50 | | | | | | | | | 0.23 | 0.46 |
| FM 10150-R.F.S.M | 150 | 6.3 | 90 | 12 | 60 | 50 | 28 | 74 | 67.2 | 50 | 69 | 21.3 | 28.1 | 0.28 | 0.56 |
| FM 10200-R.F.S.M | 200 | | 120 | | 80 | | | | | | | | | 0.37 | 0.74 |
| FM 12200-R.F.S.M | 200 | | 120 | | 80 | | | | | | | | | 0.42 | 0.84 |
| FM 12250-R.F.S.M | 250 | 7.9 | 170 | 15 | 125 | 60 | 38 | 85 | 76.5 | 60 | 82.5 | 26.2 | 34.7 | 0.58 | 1.16 |
| FM 17200-R.F.S.M | 200 | | 120 | | 80 | | | | | | | | | 0.80 | 1.60 |
| FM 17250-R.F.S.M | 250 | 9.5 | 170 | 15 | 125 | 75 | 45 | 108 | 97.7 | 70 | 100.6 | 34.9 | 45.2 | 1.11 | 2.22 |
| FM 26250-R.F.S.M | 250 | 9.5 | 170 | 15 | 125 | 80 | 55 | 111.5 | 101.2 | 80 | 111.3 | 37.8 | 48.1 | 1.17 | 2.34 |
| FE 3400-R.F.S | 101.6 | 4.8 | 70 | 11 | 40 | 40 | 22 | 59 | 53.9 | 40 | 55.3 | 15.9 | 21 | 0.15 | 0.30 |
| FE 5400-R.F.S.M | 101.6 | 6.3 | 70 | 11 | 40 | 50 | 28 | 74 | 67.3 | | 70.7 | 19.8 | 26.5 | 0.20 | 0.40 |
| FE 5600-R.F.S.M | 152.4 | 6.3 | 90 | 11 | 60 | 50 | 32 | 72 | 65.2 | 50 | 71 | 21.3 | 28.1 | 0.25 | 0.50 |
| FE 9400-R.F.S.M | 101.6 | 7.9 | 80 | 15 | 40 | 55 | 35 | 84 | 75.6 | 60 | 81 | 23.4 | 31.8 | 0.30 | 0.60 |
| FE 12600-R.F.S.M | 152.4 | 7.9 | 100 | 15 | 60 | 60 | 38 | 85 | 76.5 | 60 | 82.5 | 26.2 | 34.7 | 0.40 | 0.80 |
| FE 17600-R.F.S.M | 152.4 | 9.5 | 100 | 15 | 60 | 65 | 45 | 94.5 | 84.3 | 70 | 94.6 | 27.8 | 38 | 0.55 | 1.10 |

Note: 1) Cotter types are standard for Chain Nos. 5000 and below but rivet types are available. Cotter types are standard for Chain Nos. 7000 and above.
 2) Cotter keys used for cotter construction of FM3000 and FMS3000. T pins are used for other chain sizes.
 3) Dimensions parenthesized of FM3000 is for FMS3000.