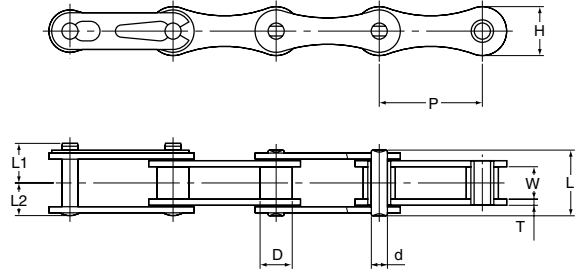


DOUBLE PITCH ROLLER CHAIN

This chain is more economical than standard roller chain and well suited for applications where shaft centers are long. Stainless steel chain is available.



UNIT Upper:inch
Beneath:mm

| OCM Chain No. | ANSI No. | Pitch | Roller Diam. | Width between L.P. | Link Plate | | Pin Diam. | Pin | | | Average Tensile Strength | Approx Weight |
|---------------|----------|-------|--------------|--------------------|------------|-------|-----------|-------|-------|-------|--------------------------|---------------|
| | | P | D | W | H | T | d | L | L1 | L2 | Lb/kg | Lb/ft kg/m |
| OCM2040 | 2040 | 1.000 | 0.312 | 0.312 | 0.472 | 0.060 | 0.156 | 0.634 | 0.382 | 0.319 | 3,784 | 0.27 |
| | | 25.40 | 7.94 | 7.95 | 12.0 | 1.5 | 3.96 | 16.1 | 9.7 | 8.1 | 1,950 | 0.41 |
| OCM2050 | 2050 | 1.250 | 0.400 | 0.376 | 0.591 | 0.080 | 0.200 | 0.799 | 0.476 | 0.409 | 6,380 | 0.45 |
| | | 31.75 | 10.16 | 9.55 | 15.0 | 2.0 | 5.08 | 20.3 | 12.1 | 10.4 | 3,200 | 0.67 |
| OCM2060 | 2060 | 1.500 | 0.469 | 0.500 | 0.677 | 0.094 | 0.234 | 1.000 | 0.579 | 0.500 | 8,910 | 0.63 |
| | | 38.10 | 11.91 | 12.70 | 17.2 | 2.4 | 5.95 | 25.4 | 14.7 | 12.7 | 4,450 | 0.94 |
| OCM2080 | 2080 | 2.000 | 0.625 | 0.626 | 0.945 | 0.125 | 0.312 | 1.287 | 0.760 | 0.647 | 16,060 | 1.139 |
| | | 50.80 | 15.88 | 15.90 | 24.0 | 3.2 | 7.94 | 32.7 | 19.3 | 16.3 | 7,500 | 1.70 |

1. Spring clip type is standard for connecting links of 2040 through 2060 and cotter for 2080 and above.
Note: Dimensions subject to change. Certified dimensions furnished upon request.