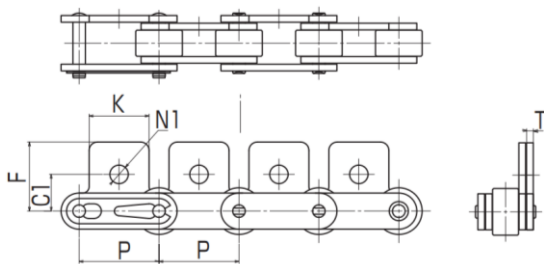


高 耐 磨 性

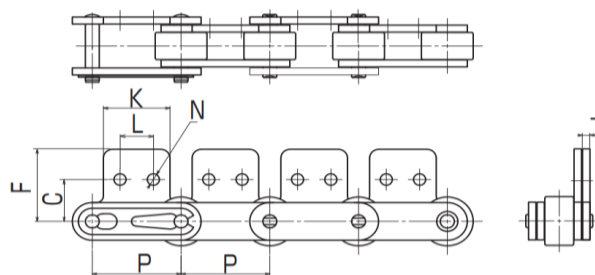
# OCM SELUBE 自润滑链条



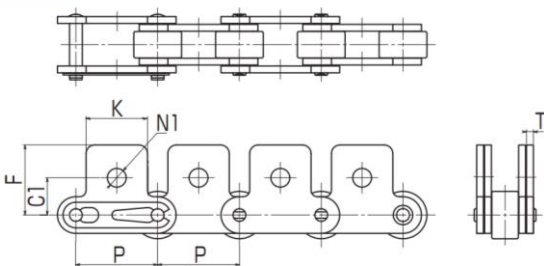
SA-1 形



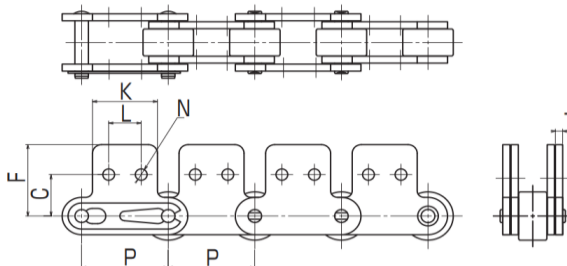
SA-2 形



SK-1 形



SK-2 形



链号 Chain No.	节距 P	链板 厚度 T	A 形尺寸						K 形尺寸		SA, SK 形尺寸			
			K	N	L	A	E	G	(2A)B	(2G)H	C	F	C1	N1
OCM C2040-SER	25.40	1.5	19.10	3.60	9.50	12.7	9.10	19.8	25.40	39.6	13.5	20.50	11.10	5.2
OCM C2042-SER														
OCM C2050-SER	31.75	2.0	23.80	5.20	11.90	15.9	11.10	24.5	31.80	49.0	15.9	25.00	14.30	6.8
OCM C2052-SER														
OCM C2060H-SER	38.10	3.2	28.60	5.20	14.30	21.4	14.70	31.5	42.80	63.0	19.1	32.90	17.50	8.8
OCM C2062H-SER														
OCM C2080H-SER	50.80	4.0	38.1	6.8	19.1	27.8	19.1	40.7	55.6	81.4	25.4	43.5	22.2	10.5
OCM C2082H-SER														
OCM C2100H-SER	63.50	4.8	47.6	8.8	23.8	33.3	23.4	49.9	66.6	99.8	31.8	53.5	28.6	14.0
OCM C2102H-SER														
OCM C2120H-SER	76.20	5.6	57.2	10.5	28.6	39.7	27.8	60.7	79.4	121.4	37.3	63.0	33.3	16.0
OCM C2122H-SER														

链号 Chain No.	平均抗拉强度		容许载荷		单个附件 重量	
	kN	kgf	kN	kgf	A, SA (kg)	K, SK (kg)
OCM C2040-SER	15.69	1,600	2.75	280	0.003	0.006
OCM C2042-SER						
OCM C2050-SER	25.49	2,600	4.51	460	0.006	0.012
OCM C2052-SER						
OCM C2060H-SER	37.26	3,800	6.27	640	0.017	0.034
OCM C2062H-SER						
OCM C2080H-SER	63.73	6,500	10.49	1,070	0.037	0.074
OCM C2082H-SER						
OCM C2100H-SER	99.96	10,200	15.40	1,570	0.070	0.140
OCM C2102H-SER						
OCM C2120H-SER	148.96	15,200	21.57	2,200	0.115	0.230
OCM C2122H-SER						

