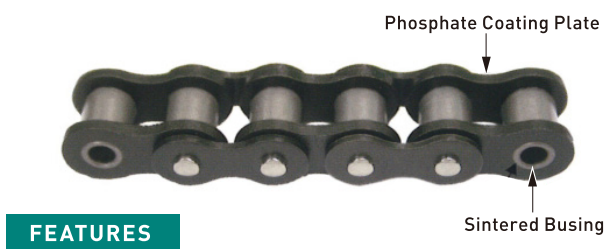


High Wear Resistance

# OCM ND SELUBE CHAIN

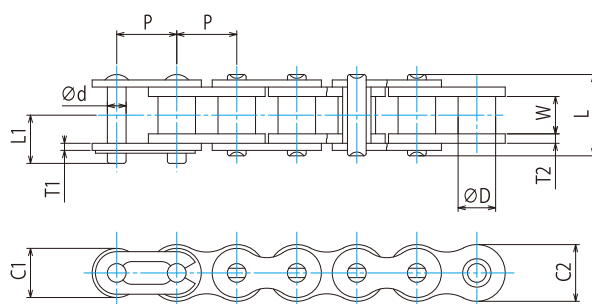
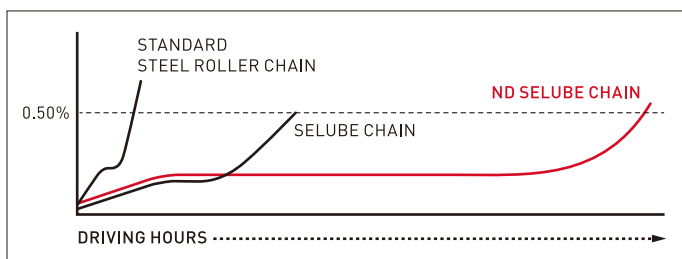


OCM ND SELUBE CHAIN provides long wear life of more than **4 times** compare with OCM standard SELUBE chain.



## FEATURES

OCM ND SELUBE CHAIN which has been subjected to special treatment has been improved its wear resistance more than 4 times compare with OCM SELUBE CHAIN in the ordinary temperature range. It is suitable to extend the time for replacement of SELUBE Chain which is currently being used. Since the dimensions of the components are same as SELUBE Chain, it is possible to replace without facilities or equipment change.



Operating Temperature: -10°C to + 150°C

Chain Speed: 150m / min.

NOTE: ND SELUBE CHAIN is determined its wear life when the chain is elongated in 0.5% against the standard dimensions.

[ Ordinary Temperature / Without Initial lubrication / OCM TEST Results Ratio ]

UNIT Upper:inch  
Beneath:mm

OCM Chain No.	Pitch P	Roller Diam. D	Width between Lk Plate W	Link Plate				Pin			Average Tensile Strength		Max Allowable Load		Approx. Weight Lb/ft kg/m
				C1	C2	T1	T2	d	L	L1	kN	Lb/kgf	kN	Lb/kgf	
40J-SER-ND	0.500 12.70	0.312 φ7.92	0.311 7.90	0.409 10.4	0.472 12.0	0.059 1.50	0.079 2.0	0.156 3.96	0.681 17.3	0.402 10.2	19.12	4,299 1,950	3.82	860 390	0.48 0.72
50J-SER-ND	0.625 15.875	0.400 φ10.16	0.374 9.50	0.512 13.0	0.591 15.0	0.080 2.00	0.094 2.4	0.200 5.08	0.835 21.2	0.496 12.6	31.86	7,165 3,250	6.17	1,389 630	0.77 1.14
60J-SER-ND	0.750 19.05	0.469 φ11.91	0.500 12.70	0.602 15.3	0.709 18.0	0.094 2.40	0.126 3.2	0.234 5.95	1.079 27.4	0.610 15.5	44.12	9,921 4,500	9.31	2,094 950	1.17 1.74
80J-SER-ND	1.000 25.40	0.625 φ15.88	0.626 15.90	0.819 20.8	0.949 24.1	0.126 3.20	0.157 4.0	0.313 7.94	1.354 34.4	0.776 19.7	78.43	17,637 8,000	16.17	3,63 1,650	2.02 3.00
08BJ-SER-ND	0.500 12.70	0.335 φ8.50	0.309 7.85	0.429 10.9	0.465 11.8	0.061 1.56	0.079 2.0	0.175 4.45	0.697 17.7	0.402 10.2	16.70	3,747 1,700	3.33	750 340	0.52 0.78
10BJ-SER-ND	0.625 15.875	0.400 φ10.16	0.386 9.80	0.539 13.7	0.579 14.7	0.061 1.56	0.079 2.0	0.200 5.08	0.795 20.2	0.472 12.0	26.00	5,842 2,650	5.00	1,124 510	0.69 1.03
12BJ-SER-ND	0.750 19.05	0.475 φ12.07	0.461 11.70	0.634 16.1	0.634 16.1	0.072 1.82	0.094 2.4	0.225 5.72	0.929 23.6	0.535 13.6	35.30	7,937 3,600	7.45	1,676 760	0.92 1.37

NOTE: 1. Offset Link is not available on ND Selube Chain. 2. N type [Plate and Roller Nickel Plated] is available. 3. The specifications described in this catalogue are subject to change without notice. Certified specifications will be furnished upon request.



**ORIENTAL CHAIN MFG.CO.,LTD.**

485 Miyanagaichimachi, Hakusan City, Ishikawa Pref., 924-0016 Japan

Tel : +81-76-276-1156 Fax : +81-76-274-9030

E-mail : ocm@ocm.co.jp

<http://www.ocm.co.jp/english.html>

<http://www.rollerchain.com>

ISO 9001  
Cert JQA 1248



JAPAN QUALITY ASSURANCE ORGANIZATION

THE INTERNATIONAL CERTIFICATION NETWORK