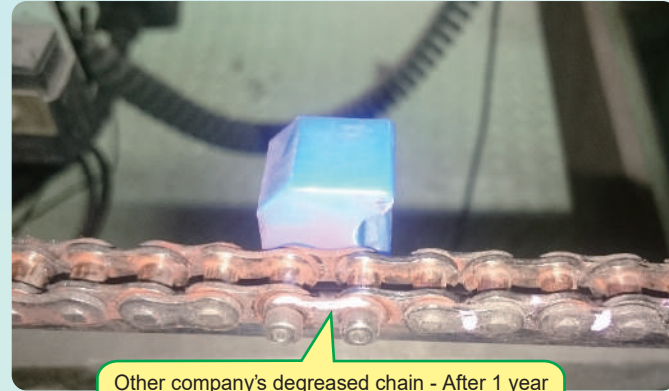


Monitoring after installation and Test Data

Papermaking Industry / Paper packaging line

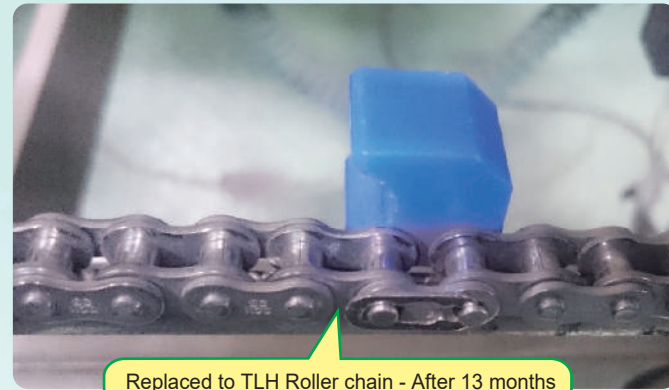
In the paper packaging line, the degreased chains were used so that they were free of oil or paper dust, but they rusted, causing a problem. They were replaced with TLH Roller Chain, which has not rusted even after 13 months of use.



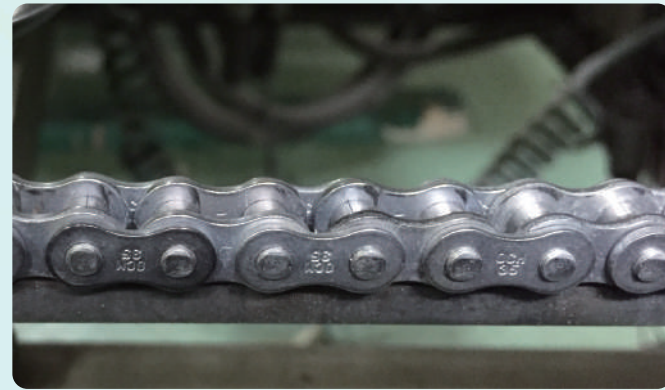
Other company's degreased chain - After 1 year



Replaced to TLH Roller chain - After 0 month



Replaced to TLH Roller chain - After 13 months

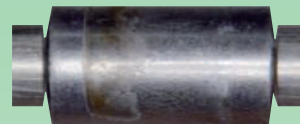


Replaced to TLH Roller chain - After 4 months

35TLH Appearance check (after washing)



Pin



Bush O.D.



Bush I.D.

Wear Status

	35-TLH
Pin O.D.	0.005 mm or less
Bush O.D.	0.005 mm or less
Bush I.D.	0.005 mm or less

After use, the amount of wear on the pin outside diameter, bushing outside diameter, bushing hole diameter, etc. was 0.005 mm or less, and the TLH layer remained. Thanks to the TLH layer, no rust was observed. In addition, the tensile strength did not decrease and was within the internal standard range.



35-TLH

Tensile Strength Test

	35-TLH
JIS Standard Value	7.9(kN)
Measured value	10.9(kN)
Cut Point	Inner Plate
Judgment	Within the Standard Range

Wear Resistance

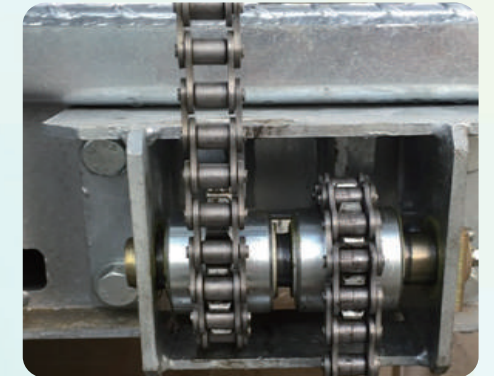
35-TLH
Elongation: 0.07% (without initial antirust oil application)

Multistory Parking Industry / Drive Chain

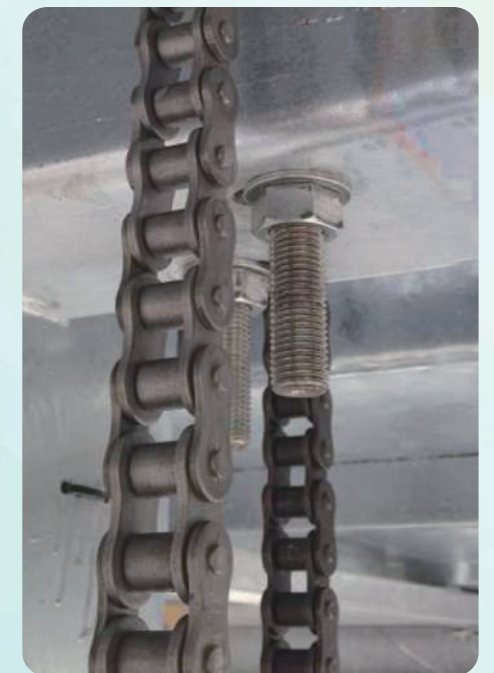
In the multi-story car park, the chains were used outdoors, where they were exposed to high humidity with rain, mud, dust, etc.



Outdoor multi-story car park



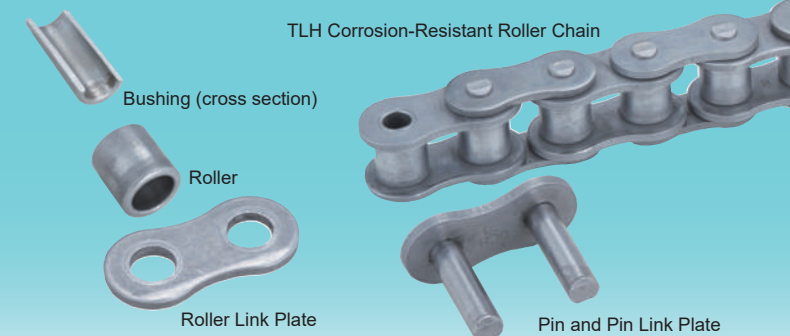
Drive Chain



Hoisting Chain

Hoisting Test

The TLH Roller Chain did not rust after 26,000 hoisting test cycles (outdoors) for 8 months.



Chain Parts After Use (After Washing)

RoHS-Compliant

Corrosion-resistant Roller Chain TLH Series is environmentally friendly and does not contain hazardous substances, such as hexavalent chromium, lead, cadmium, or mercury.

Available with Various Models

TLH treatment is available with various models.

Please note that TLH series is unavailable under the following conditions.

- If the chain is in direct contact with food, or there is a possibility that abrasion powder may be mixed into the food.
- If the chain is used where the TLH coating can be scraped off, such as with an abrasive powder. The coating flakes can fall into the food and cause a problem.

Please feel free to contact us when using a chain in cases such as a) and b) above.