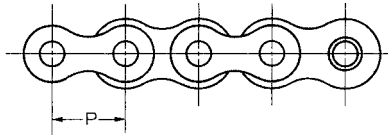
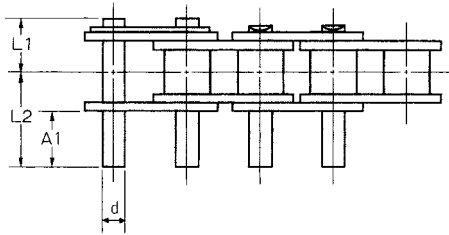


ROLLER CHAIN WITH EXTEND PIN



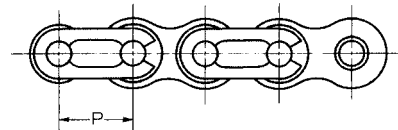
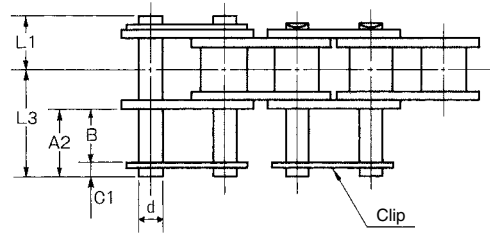
D-3



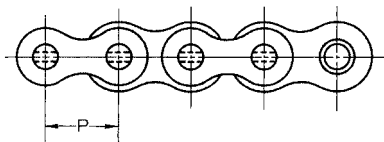
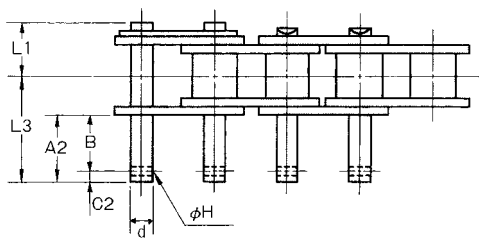
D-3 EXTEND PIN



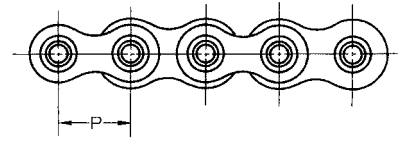
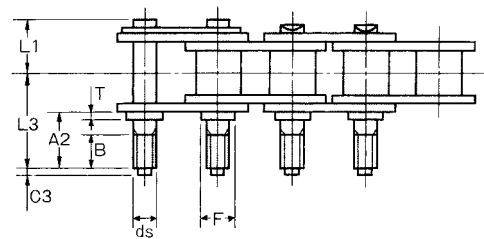
D-1



EXTEND PIN WITH SPRING CLIP



EXTEND PIN WITH COTTER HOLE



THREADED EXTEND PIN

UNIT Upper:inch
Beneath:mm

OCM Chain No.	Pitch		Pin Diam.		Link Plate	Pin	Pin							L3,A2,B
	P	P	d	d			ds	F	T	φ H	L1	L2	A1	
35	0.375	0.141	M3	0.180	0.047	0.047	0.264	0.575	0.374	0.067	0.055	0.039	1.0	
	9.525	3.58												4.58
40	0.500	0.156	M4	0.201	0.059	0.063	0.382	0.657	0.374	0.091	0.083	0.039	1.0	
	12.7	3.96												5.11
50	0.625	0.200	M5	0.238	0.079	0.063	0.476	0.827	0.469	0.122	0.091	0.039	1.0	
	15.875	5.08												6.04
60	0.750	0.234	M6	0.319	0.094	0.079	0.579	1.014	0.563	0.122	0.102	0.059	1.5	
	19.05	5.95												8.09
80	1.000	0.313	M8	0.381	0.126	0.102	0.776	1.331	0.752	0.154	0.142	0.059	1.5	
	25.4	7.94												9.68
100	1.250	0.375	M10	0.443	0.157	0.122	0.925	1.642	0.937	-	0.157	0.079	2.0	
	31.75	9.53												11.26
120	1.500	0.437	M12	0.520	0.189	0.122	1.118	2.020	1.126	-	0.157	0.079	2.0	
	38.1	11.11												13.2

Spring clip is not available for 100 and above.